

JAWTRACK

MOBILE JAW CRUSHER

BPJ 106



BUILT FOR HARSH SITUATIONS INCLUDING EXTREME COLD ENVIRONMENTS
EASY TO TRANSPORT DUE TO FOLDABILITY

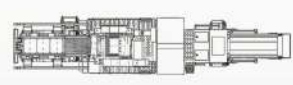
CAN EASILY BE COMBINED WITH OTHER BORATAS MOBILE MACHINES AS TANDEM WORKING.

WEIGHT: 44,000 kg

LENGTH
(mm)

WIDTH
(mm)

HEIGHT
(mm)

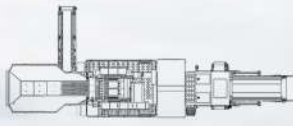
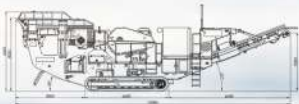


TRANSPORT

14,900

3,150

3,630



OPERATION

15,080

5,970

4,360



AGGREGATES



Foldable Parts for
easy transportation
and compactness



MINING



Quick set-up time
Ease of use
Easy maintenance



RECYCLING



Diesel-electric drive
Full hybrid
Environment-friendly



Track-mounted
High mobility
On-site flexibility

JAWTRACK

MOBILE JAW CRUSHER

BPJ 106

The Boratas® Mobile Jaw Crusher BPJ106 from Jawtrack series is the perfect combination of compactness, mobility, and high performance featuring an imposing jaw crusher from the performant BCK jaw crusher series. Typically used in mining, quarrying, and recycling, These mobile jaw crushers are ideal for work in urban regions with a limited surface.

Using a single toggle jaw, Jawtrack BPJ106 mobile jaw crusher is able to crush all types of natural stones from the hardest granites to more abrasive varieties. Moreover, they are also used for recycling by reducing materials such as asphalt, concrete, and other construction materials.

Furthermore, Jawtrack BPJ106 comes in different sizes and features and is supplied as standard or customized versions.

Features & Benefits

- High Capacity Jaw Crusher
- Operates with Electricity or Diesel
- Hydraulically Foldable Belts
- Wireless Remote Control
- PLC control system
- Drum motors for conveyors
- Vibrating Feeder with Grizzly Screen
- Lightning Arm

Optional Features

- Metal separator magnet
- Hardox Armoured Bunker
- Automatic lubrication system for conveyors
- Dust-reduction system
- Main conveyor cover

• Control panel

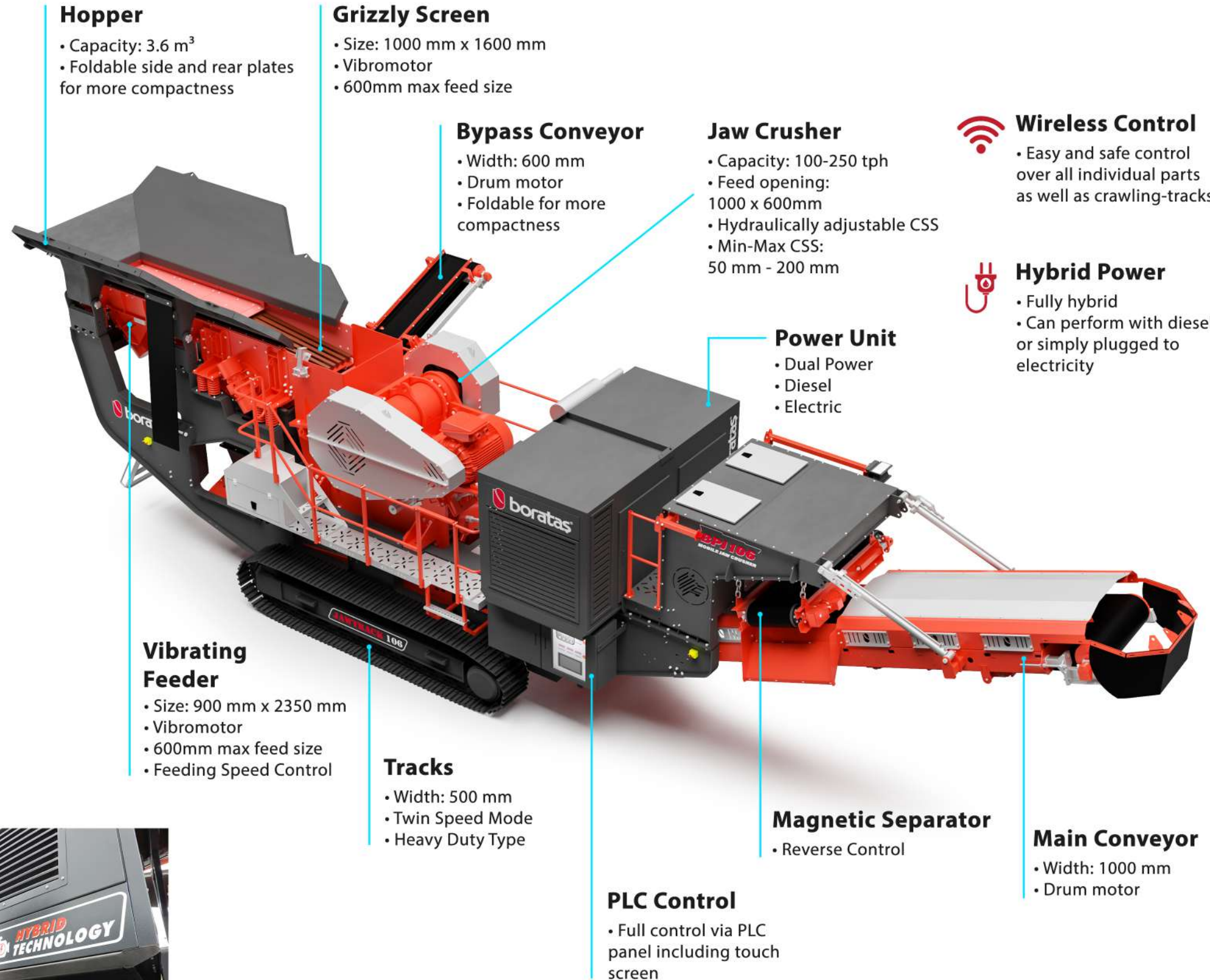
Based on PLC system, LCD touch screen shows all details which are running at the moment.

• Remote Control

Walking control, speed of the feeding and functionality of components can be controlled.

• Hybrid Drive

Easy Plug-In Socket for switching from diesel to electric drive.



Hopper

- Capacity: 3.6 m³
- Foldable side and rear plates for more compactness

Grizzly Screen

- Size: 1000 mm x 1600 mm
- Vibromotor
- 600mm max feed size

Bypass Conveyor

- Width: 600 mm
- Drum motor
- Foldable for more compactness

Jaw Crusher

- Capacity: 100-250 tph
- Feed opening: 1000 x 600mm
- Hydraulically adjustable CSS
- Min-Max CSS: 50 mm - 200 mm



Wireless Control

- Easy and safe control over all individual parts as well as crawling-tracks



Hybrid Power

- Fully hybrid
- Can perform with diesel or simply plugged to electricity

Power Unit

- Dual Power
- Diesel
- Electric

Vibrating Feeder

- Size: 900 mm x 2350 mm
- Vibromotor
- 600mm max feed size
- Feeding Speed Control

Tracks

- Width: 500 mm
- Twin Speed Mode
- Heavy Duty Type

Magnetic Separator

- Reverse Control

Main Conveyor

- Width: 1000 mm
- Drum motor

PLC Control

- Full control via PLC panel including touch screen